

# Canyon & NEW Canyon Edge

Gabion-Style Benches & Stools | Curved | Linear | Custom

*Choose Canyon benches and stools for a quick, no-fuss gabion-style seating look without the hassle. Simply add the stone of your choice to the provided cage, then mount the seat cap on top. No additional structural support is needed.*



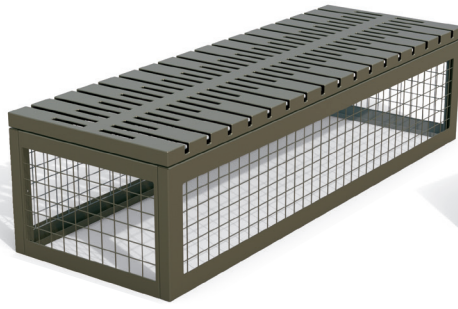
Linear Bench CAN1872P shown in textured fern and textured charcoal. Stool CAN1824P shown in textured orange and textured bronze. Stone not included.



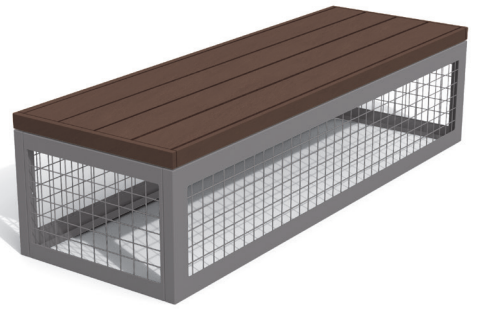




CAN1872T — Shown in Thermory and textured charcoal.



CAN1872P — Shown in steel cap with Fusion Advantage in textured bronze.



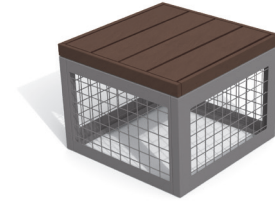
CAN1872R — Shown in mahogany and textured pewter.



CAN1824T — Shown in Thermory and textured charcoal.



CAN1824P — Shown in steel cap with Fusion Advantage in textured bronze.



CAN1824R — Shown in mahogany and textured pewter.

## Canyon Collection

- 20-year limited structural warranty; Thermory® 10-year warranty; 7-year finish warranty against fading on cage frame and mesh panels; see full details on multi-year warranties for components at [www.anovafurnishings.com/warranty.aspx](http://www.anovafurnishings.com/warranty.aspx)
- Seat caps available in your choice of recycled plastic planks, Thermory planks or heavy-gauge steel with the Fusion Advantage finish
- Rust-resistant, powder coated cage frame and mesh panels feature a state-of-the-art primer proven to prevent rusting
- Pre-drilled holes for easy surface mounting
- Manufactured in the U.S.
- Assembly required

See full details and color options at [anovafurnishings.com/canyon](http://anovafurnishings.com/canyon).

### Canyon Gabion-Style 6' Benches

Recycled Plastic Cap **CAN1872R** 18"H x 24"W x 71"L • 106 lbs.

Thermory Cap **CAN1872T** 18"H x 24"W x 71"L • 100 lbs.

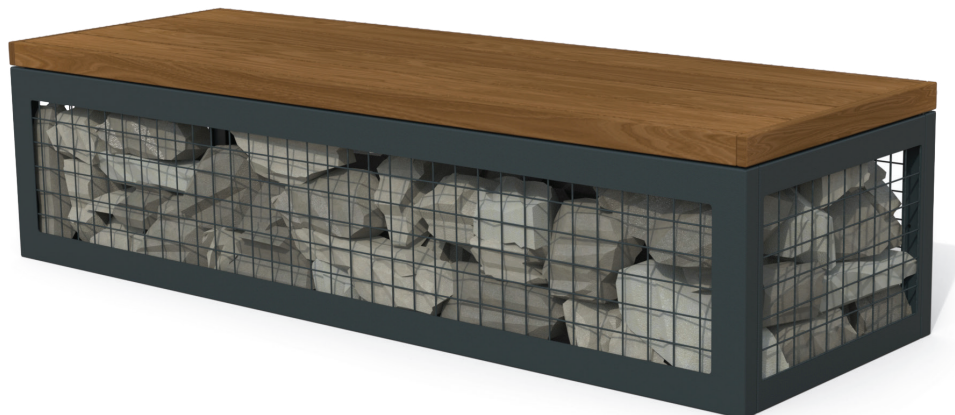
Steel Cap with Fusion Advantage **CAN1872P** 18"H x 24"W x 71"L • 190 lbs.

### Canyon Gabion-Style 2' Stools

Recycled Plastic Cap **CAN1824R** 18"H x 24"Sq. • 50 lbs.

Thermory Cap **CAN1824T** 18"H x 24"Sq. • 45 lbs.

Steel Cap with Fusion Advantage **CAN1824P** 18"H x 24"Sq. • 57 lbs.



CAN1872T — Shown in Thermory and textured charcoal. Stone not included.

## NEW Canyon Edge

- 20-year limited structural warranty; Thermory® 10-year warranty; 7-year finish warranty against fading on cage frame and mesh panels; see full details on multi-year warranties for components at [www.anovafurnishings.com/warranty.aspx](http://www.anovafurnishings.com/warranty.aspx)
- Seat caps available in your choice of recycled plastic or Thermory planks
- Rust-resistant, powder coated cage frame and mesh panels feature a state-of-the-art primer proven to prevent rusting
- CE1815 powder coated steel seat cap with powder coated, heavy-gauge aluminum cage frame and stainless steel mesh panels
- Customization available. Ask your sales rep for details
- Pre-drilled holes for easy surface mounting
- Manufactured in the U.S.
- Assembly required

See full details and color options at [anovafurnishings.com/canyon](http://anovafurnishings.com/canyon).



Custom install — Peck Farm Park, Geneva, IL. Stone not included.



CE1848R shown in cedar and textured pewter. Stone not included.



CE1860R shown in mahogany and textured pewter. Stone not included.

### Canyon Edge Gabion-Style Benches

4' Corner Bench, Recycled Plastic	CE18J90R
4' Corner Bench, Thermory	CE18J90T
15" Accent Section	CE1815
4' Linear Bench, Recycled Plastic	CE1848R
4' Linear Bench, Thermory	CE1848T
5' Linear Bench, Recycled Plastic	CE1860R
5' Linear Bench, Thermory	CE1860T
6' Linear Bench, Recycled Plastic	CE1872R
6' Linear Bench, Thermory	CE1872T
R18' Curved Bench, Recycled Plastic	CE18C18R
R18' Curved Bench, Thermory	CE18C18T
R26' Curved Bench, Recycled Plastic	CE18C26R
R26' Curved Bench, Thermory	CE18C26T

18"H x 48"W x 48"L • 260 lbs.
18"H x 48"W x 48"L • 245 lbs.
18"H x 24"W x 15"L • 71 lbs.
18"H x 24"W x 48"L • 187 lbs.
18"H x 24"W x 48"L • 177 lbs.
18"H x 24"W x 60"L • 224 lbs.
18"H x 24"W x 60"L • 211 lbs.
18"H x 24"W x 72"L • 258 lbs.
18"H x 24"W x 72"L • 243 lbs.
18"H x 24"W x 60"L • 244 lbs.
18"H x 24"W x 60"L • 231 lbs.
18"H x 24"W x 60"L • 242 lbs.
18"H x 24"W x 60"L • 229 lbs.



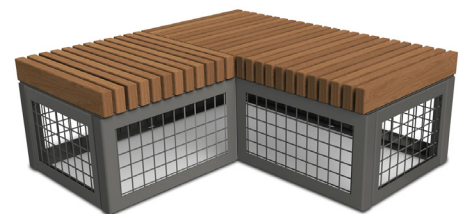
CE18C18T shown in Thermory and textured teal. Stone not included.



CE18C18T paired with CE1815 shown in Thermory and textured black. Stone not included.



CE1815 shown in textured orange and textured pewter. Stone not included.



CE18J90T shown in Thermory and textured bronze. Stone not included.

