

AE2633CBT-STX

Airi Stix 33-Gallon Trash Receptacle with Side Door, Curve Top



Accessories

Black Plastic Liner R-DOM2005

Material

The receptacle is composed of heavy-duty, 12-gauge steel panels with an extruded aluminum frame. Steel side panels feature a unique architectural perforated tree line pattern. The built-in curve style top is 10-gauge steel with wide front and back openings. The reusable plastic liner is made of high-density polyethylene.

Features

Side door features a magnetic door latch, a continuous geared hinge and a tamper-resistant cam lock and key system. The receptacle is designed to be portable for flexibility in placement or surface mounted using .5" pre-drilled holes inside the base to prevent movement. Features adjustable rubber feet to assist in leveling the receptacle. **The mounting hardware is not included.**

Finish

Rust-proof aluminum and rust-resistant primed steel feature a fade-resistant powder coating. Treated components exceed the industry standard by 34% in testing by independent sources.

Assembly

This product ships fully assembled and ready-to-use. Assembled using stainless steel hardware.

Color

See website or sales representative for color choices.

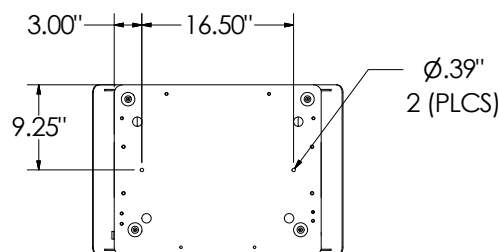
Maintenance

The product is virtually maintenance-free and requires only periodic cleaning with a sponge and a solution of mild detergent and water to remove surface dirt. Do not clean with solvent or petroleum base products.

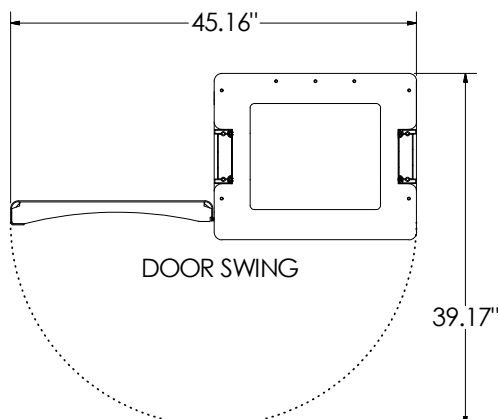
Warranty

20-year limited structural warranty with 3-year finish warranty on powder coated steel and aluminum; 7-year warranty against fading from the date of purchase. See full details on multi-year warranties for components at anovafurnishings.com/warranty.

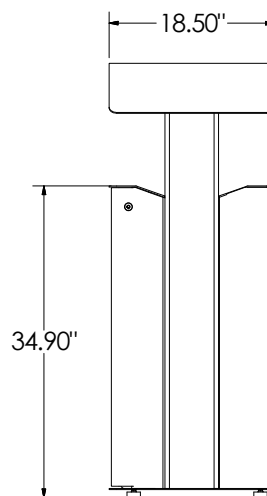
Manufactured in the U.S.



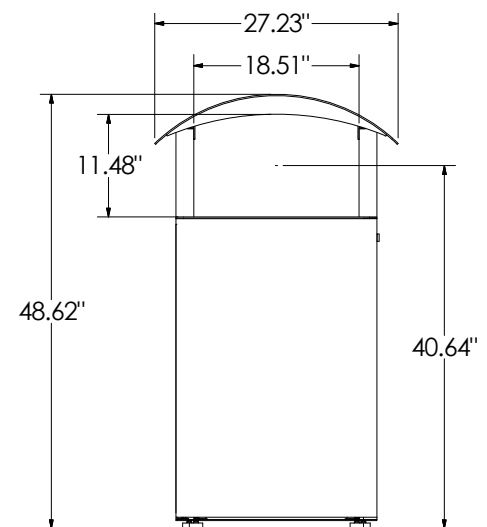
SURFACE MOUNT



DOOR SWING



SIDE VIEW



FRONT VIEW