

BH1840R

Beacon Hill Recycled Plastic Table with 4 Contour Seats



Material

The 41.52" square table top is composed of a 10-gauge steel frame with recycled plastic planks. The contour seats are composed of recycled plastic planks along with aluminum accent planks and steel plates. 1" x 3.5" (1" x 4" nominal dimensions) recycled plastic planks are made of 95% recycled content by weight. The frame and legs are made of 2.38" O.D. steel tubing with built-in umbrella holder. Table top is designed to support 100 lbs. per square foot; the seats will support 200 lbs. per linear foot.

Features

The table top features an optional 1.64" diameter umbrella hole in the center. The table is designed to be portable for flexibility in placement or surface mounted using pre-drilled .41" diameter holes in the feet to prevent movement, **mounting hardware is not included**.

Finish

Recycled plastic planks are impervious to moisture and corrosion, do not require the application of sealants or preservatives, and will never need painting or staining throughout the product's life. Rust-proof aluminum and rust-resistant primed steel components feature a fade-resistant powder coating. Treated components exceed the industry standard by 34% in testing by independent sources.

Assembly

This product requires some assembly. The table top and seats ship pre-assembled. Stainless steel assembly hardware is included.

Color

See website or sales representative for color choices.

Maintenance

The product is virtually maintenance-free and requires only periodic cleaning with a sponge and a solution of mild detergent and water to remove surface dirt. Do not clean with solvent or petroleum base products.

Warranty

See full details on multi-year warranties for components at anovafurnishings.com/warranty.

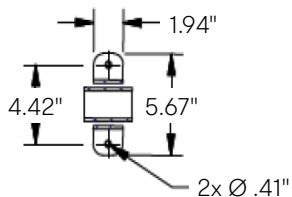
Manufactured in the U.S.

Umbrella Options

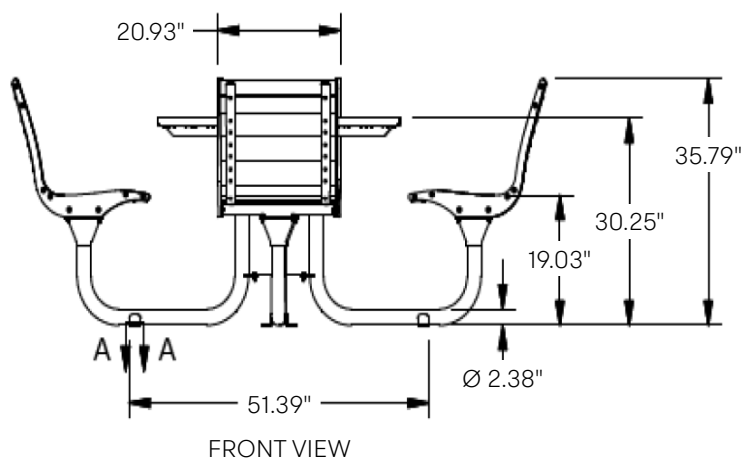
Standard Fabric Colors 9LPU-CSC

Premium Fabric Colors 9LPU-CPC

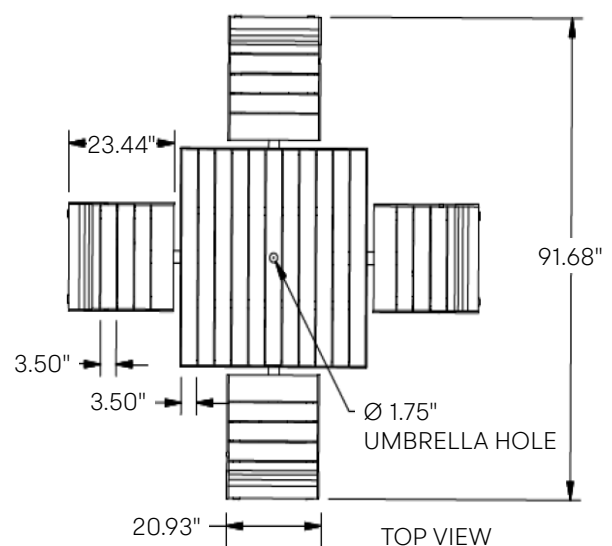
Umbrella Brace UBACE



FOOT MOUNT



FRONT VIEW



TOP VIEW