



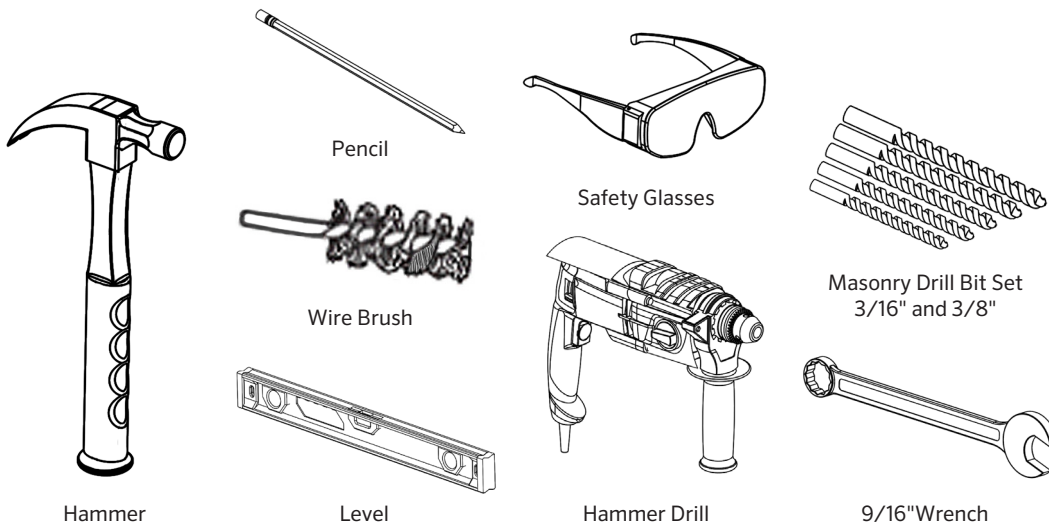
anovafurnishings.com
888.535.5005 tel

Installation Instructions

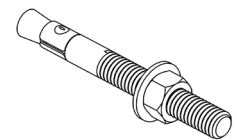
Exposition Receptacles



TOOLS NEEDED:



HARDWARE NEEDED:



(2) 3/8" x 5"
Stainless Steel Stud Anchors
[92188A203](#)



Optional: (2) 3/8"
Rubber Washers
[90130A050](#)

Step-by-Step Installation Sequence

The receptacle ships fully assembled and ready for use.

Examine the footing or slab for damage or defects. The footing or slab should be reinforced concrete rated at a 3,000 psi minimum and be cured for at least 28 days prior to the installation of the receptacle.

 **CAUTION:** Oversized holes and holes drilled too deep in the concrete will make it difficult to set the anchor.

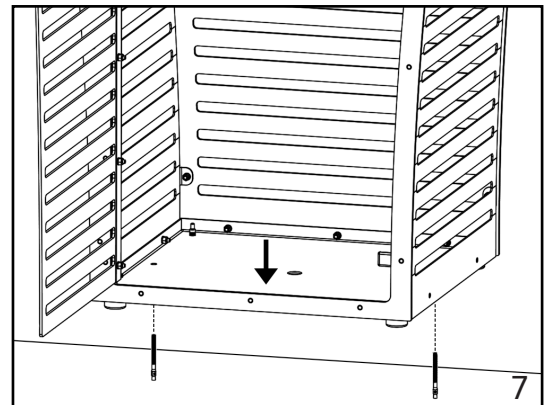
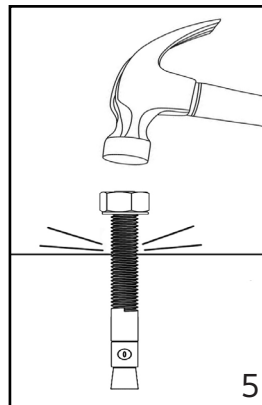
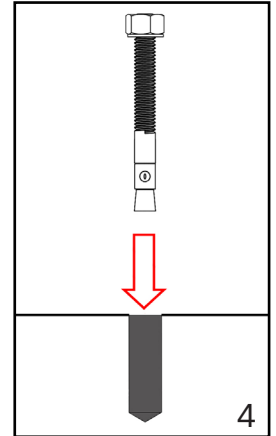
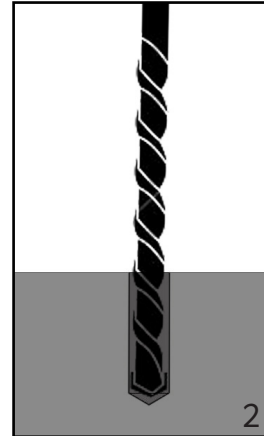


Installation Instructions

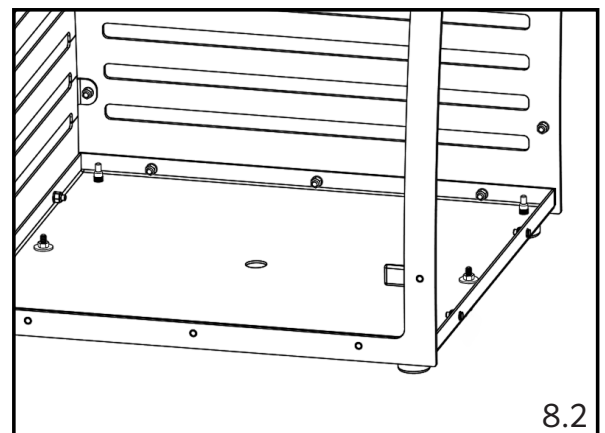
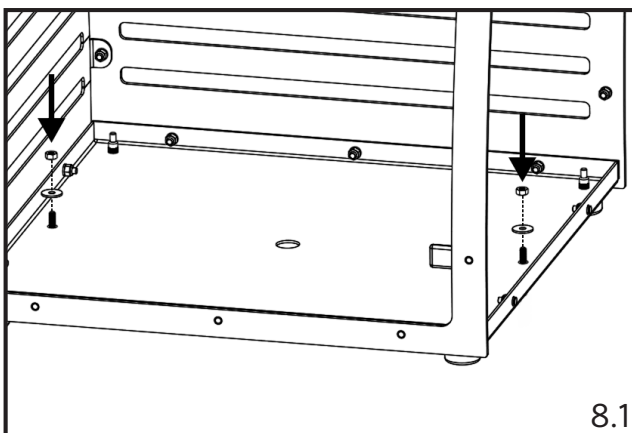
Exposition Receptacles

Step-by-Step Installation Sequence

1. Place receptacle in the desired location. Mark the location of the holes with a pencil. To verify the alignment of the anchor markings you may reference the "Foot Mount" image on page 1.
2. It is recommended that you start holes with smaller to the larger drill bits in a sequential order. Begin with 3/16" diameter drill bit followed by the 3/8" diameter bit to avoid oversized holes or holes drilled too deep."
3. Evacuate debris from mounting holes using compressed air and a steel wire brush. This will create a clean environment for the anchor system.
4. Locate an anchor and adjust the nut so it is flush with the top of the anchor to protect the threads from being damaged. Insert the anchor into the hole.
5. Use the hammer to fix the anchor into the drilled hole by giving it several hammer blows.
6. Repeat steps 3 - 6 until all anchors are installed.
7. Remove the nuts and washers off of the anchors. Align the mounting holes of the receptacle over top of the anchors and slide it down into place.



8. Care should be given to avoid rubbing the powder coating off the base. A 3/8" rubber washer is a suitable replacement option. Mount the receptacle to the ground by fastening a washer and nut onto each anchor. Leave the hardware finger tight until all of them have been installed. Verify that the receptacle is level before tightening the anchors. Tighten all of the hardware with a 9/16" wrench.

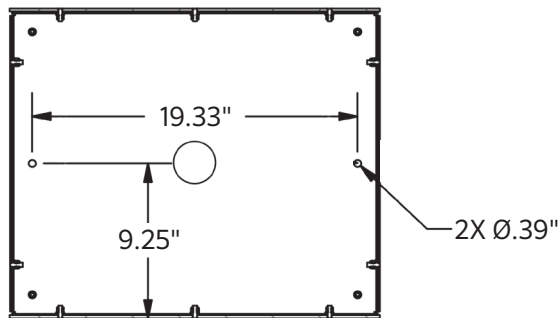




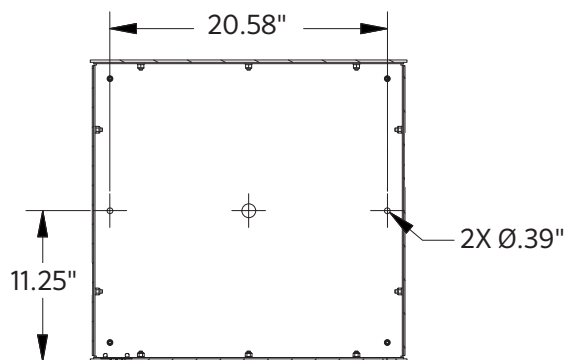
Installation Instructions

Exposition Receptacles

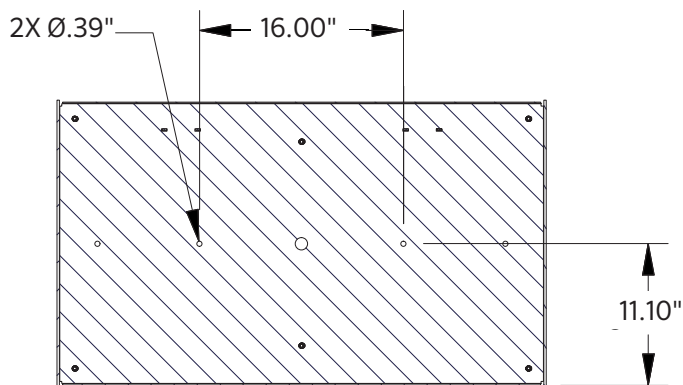
FOOT MOUNTS:



LEX33



LEX45



LEX70

Note: Please contact Customer Care at 1-866-797-1761 when ordering replacement parts.



- Furniture must not be used other than for its intended purposed and should be inspected regularly for loose, missing, or broken hardware, and general instability.
- Furniture that is damaged or appears to be unstable must be removed from service and be repaired or replaced.
- Repairs must be made using only factory authorized parts and methods.

CARE AND MAINTENANCE

- Do not drag the assembled unit across any surface.
- This product requires only periodic cleaning with a sponge and a solution of mild detergent and water to remove surface dirt. Do not clean with a solvent or petroleum based products.